



Advocacy • Action • Answers on Aging

Oakland County Older Adult Poverty

Geographic Area	Income in Past 12 Months Below Poverty Level			
	Population for Whom Poverty Status is Determined		% of Older Adult Population	
	60+	65+	60+	65+
Michigan	1,848,704	1,302,284	8.5%	8.1%
Region 1-B	522,743	363,644	6.8%	6.9%
Oakland County	15,623	10,778	6.8%	7.1%
Addison Township	40	19	3.1%	2.6%
Auburn Hills	172	89	6.3%	5.1%
Berkley	178	135	7.0%	8.1%
Beverly Hills*	54	28	2.2%	1.6%
Bingham Farms*	8	8	1.5%	2.0%
Birmingham	123	84	2.9%	2.9%
Bloomfield Township	482	290	4.0%	3.4%
Bloomfield Hills	30	30	2.5%	3.5%
Brandon Township	126	105	5.5%	7.8%
Clawson	347	165	13.4%	9.5%
Commerce Township	279	186	4.3%	4.6%
Farmington	223	170	10.3%	11.5%
Farmington Hills	1,146	888	6.6%	7.4%
Ferndale	244	123	8.1%	6.6%
Franklin village*	13	10	2.0%	2.5%
Groveland Township	63	30	6.6%	6.3%
Hazel Park	595	443	21.4%	22.8%
Highland Township	171	113	5.2%	5.4%
Holly Township	81	70	4.0%	5.2%
Huntington Woods	25	14	2.0%	1.8%
Independence Township	259	146	4.2%	3.8%
Keego Harbor	74	36	15.3%	12.0%
Lake Angelus	2	0	1.6%	0.0%
Lake Orion*	22	22	4.1%	5.8%
Lathrup Village	20	20	1.7%	2.9%
Leonard*	8	3	10.3%	7.3%
Lyon Township	65	21	3.1%	1.7%
Madison Heights	945	700	15.9%	17.4%

* Figures for this area are for information purposes and are included in Township totals. Source: U.S. Census Bureau, 2007-2011 American Community Survey (Table B17001).

^ Figures for this area also include out-of-county residents. 2011 poverty levels as defined by the U.S. Census Bureau:

Household size	100% poverty threshold		150% poverty threshold	
	Age 0-64	Age 65+	Age 0-64	Age 65+
Single-person	\$11,702	\$10,788	\$17,553	\$16,182

Household size	100% poverty threshold		150% poverty threshold	
	Age 0-64	Age 65+	Age 0-64	Age 65+
Two-person	\$15,139	\$13,609	\$22,709	\$20,414



Advocacy • Action • Answers on Aging

Oakland County Older Adult Poverty

Geographic Area	Income in Past 12 Months Below Poverty Level			
	Population for Whom Poverty Status is Determined		% of Older Adult Population	
	60+	65+	60+	65+
Milford Township	149	102	4.9%	5.2%
Milford*	63	48	5.5%	5.8%
Northville^	17	17	1.2%	1.8%
Novi	356	248	3.9%	4.0%
Novi Township	2	0	4.3%	0.0%
Oak Park	1,137	895	20.1%	24.0%
Oakland Township	137	108	4.4%	5.3%
Orchard Lake	20	8	3.4%	2.1%
Orion Township	226	150	4.4%	4.6%
Ortonville*	8	3	4.7%	3.4%
Oxford Township	208	104	6.4%	5.1%
Oxford*	77	38	16.7%	12.4%
Pleasant Ridge	19	12	3.1%	3.4%
Pontiac	1,282	729	15.2%	13.0%
Rochester	117	78	5.3%	5.1%
Rochester Hills	751	524	5.5%	6.0%
Rose Township	44	4	3.9%	0.6%
Royal Oak	884	694	8.0%	9.0%
Royal Oak Township	105	62	18.2%	14.8%
South Lyon	155	142	7.4%	9.2%
Southfield	1,637	1,146	9.7%	9.8%
Southfield Township	74	46	2.0%	1.8%
Springfield Township	109	65	5.0%	5.1%
Sylvan Lake	19	13	4.3%	4.4%
Troy	937	665	5.9%	6.5%
Village of Clarkston	5	0	1.7%	0.0%
Walled Lake	143	81	11.2%	9.2%
Waterford Township	701	459	5.5%	5.3%
West Bloomfield Township	537	364	3.6%	3.5%
White Lake Township	202	137	3.9%	4.2%
Wixom	59	31	4.6%	4.2%
Wolverine Lake*	53	53	6.9%	10.5%

* Figures for this area are for information purposes and are included in Township totals. Source: U.S. Census Bureau, 2007-2011 American Community Survey (Table B17001).

^ Figures for this area also include out-of-county residents. 2011 poverty levels as defined by the U.S. Census Bureau:

Household size	100% poverty threshold		150% poverty threshold	
	Age 0-64	Age 65+	Age 0-64	Age 65+
Single-person	\$11,702	\$10,788	\$17,553	\$16,182
Two-person	\$15,139	\$13,609	\$22,709	\$20,414

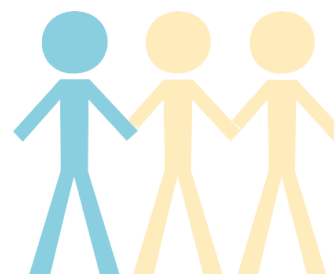
Oakland County Older Adult Poverty

10,778 (7%) of Oakland County residents age 65+ live below poverty, but more than one in three need financial assistance to live independently.¹

Poverty Measures

Elder Economic Security Standard Index ² (Elder Index)	U.S. Census Poverty Threshold ³
Measure of actual cost of living for 65+ older adults	Statistical benchmark not intended to indicate what individuals and families need to live
Computed by adding regional costs of: <ul style="list-style-type: none"> • Housing • Food • Health care • Transportation • Basic miscellaneous expenses 	Computed by applying the inflation rate derived from the Consumer Price Index for all Urban Consumers to original poverty thresholds based on: <ul style="list-style-type: none"> • 1963-1964 U.S. Department of Agriculture food budgets for families in economic stress • 1963-1964 data about what portion of income families dedicate to food
Based on: <ol style="list-style-type: none"> 1. Household size 2. Housing tenure 3. Health status 4. Public or private transportation 	Based on: <ol style="list-style-type: none"> 1. Family size 2. Age of family members
Based on the Elder Index, Michigan older adults need an annual income of: \$16,718(🧑) \$26,236(🧑🧑)	To be above the Census poverty threshold, Michigan older adults need an annual income of: \$10,788(🧑) \$13,609(🧑🧑)

35.3%—more than one in three—Oakland County older adults live below the Elder Index, meaning they do not have enough income to remain independent without assistance.¹



¹ Jankowski, T., Booza, J., & Leach, C. (2011). *Invisible poverty: New measure unveils financial hardship in Michigan's older adult population*. Detroit, MI: Institute of Gerontology.

² Russell, L. H., Bruce, E. A., & Conahan, J. (2006). *The WOW-GI National Elder Economic Security Standard: A methodology to determine economic security for elders*. Gerontology Institute, John W. McCormack Graduate School of Policy Studies, University of Massachusetts Boston & Wider Opportunities for Women.

³ U.S. Census. (2013). *How the Census Bureau measures poverty*. Retrieved from <http://www.census.gov/hhes/www/poverty/about/overview/measure.html>